



Soft Source Technologies Pvt. Ltd.



^{SS}**TOPKLAS**TM
LEARNING BEYOND IMAGINATION

AI and **AR**

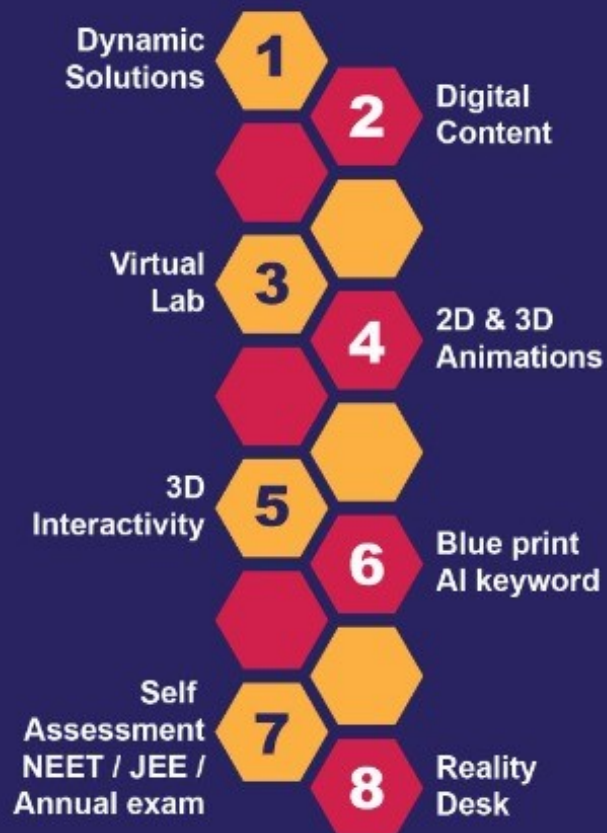
Assisted Virtual Lab and
Digital Learning Solution



www.softsource.in

Class XI and XII

**NCERT / CBSE / ISC / STATE Boards
NEET / JEE / Entrance Exams**



Chemistry Theory



Biology Theory



Physics Theory



Physics Virtual Lab



Chemistry Virtual Lab



Biology Virtual Lab



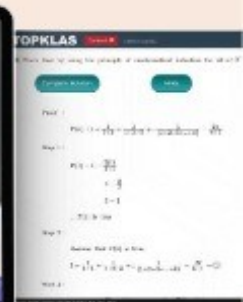
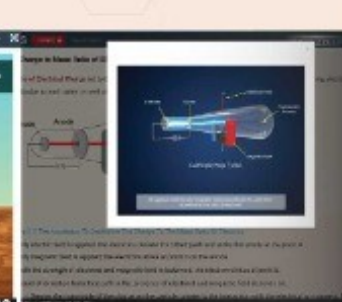
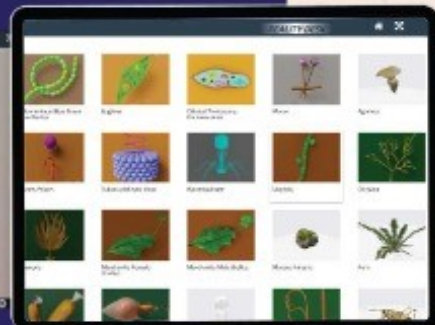
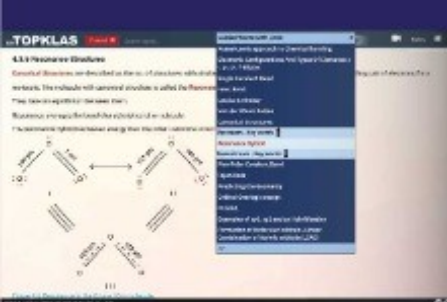
Mathematics



Reality Desk



Self Assessment



Automated Guided Learning Solutions For Theory & Laboratory (+1 and +2)

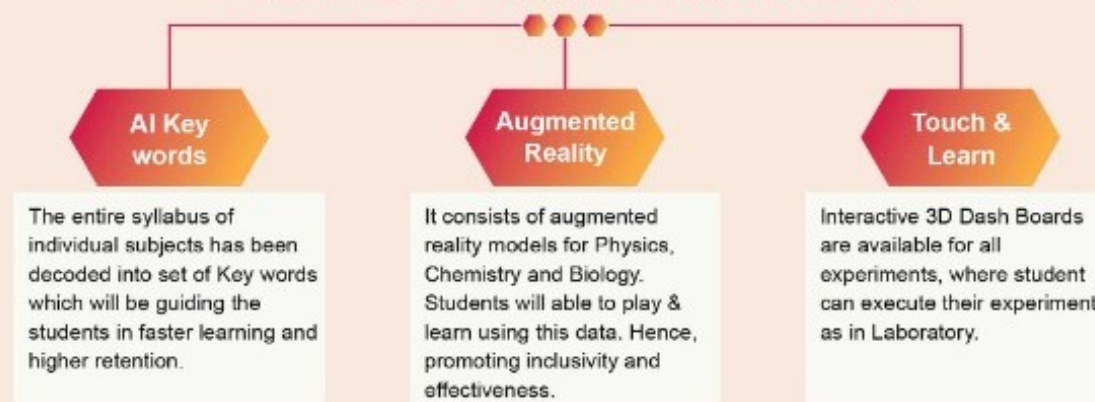
In the last 2 decades, Digital Technologies are very familiarized into the education sector, particularly, K12 Education. It is common knowledge that digital content is viewed as a Text Book in digital format, and other primitive Learning Techniques. The video lectures are very monotonous and boring, thus, achieving very limited success. The Artificial Intelligence (AI) and Augmented Reality (AR) based learning solutions has been innovated for effective utilization of Touch Screen Technologies.

- **SS Topklas** is focused at aiding and enhancing Class Room Teaching and Self-Learning, and will not isolate these core activities of School Education
- Wide range of solution for all students of the class and it assist to enhance the teaching/learning with effective Technologies.
- **SS Topklas** is customized and mapped to the curriculum — Chapter-wise & Topic-wise
- Learners should gain the knowledge in fundamentals and secured high score through retain the knowledge.



SS TOPKLAS
DIGITAL PLATFORM
 is delivered in different sizes of **TAB** with or without **INTERNET** Requirements.

TECHNOLOGICAL INNOVATIONS



The salient features of our product:

- It is structured in interactive methodologies in all types of SMART CLASSROOMS and Hand-Held devices
- Mapped Digital Content as required in examinations — both annual & Competitive Exams
- Detailed visualization for every concept by using 2D and 3D demonstrations
- Visuals are explained by real-life examples and creative explanatory methods
- Text Content and Visuals are Linked for effective utilization — provided across the first chapter to the last chapter
- Topic-wise assessment integrated with Digital Content
- Interactive Virtual Lab for Practical — Look & Feel same as laboratory environment
- Students can execute the experiment on their devices using the interactive 3D dashboard

QMAP

A module for NEET/JEE/ Annual Exam Preparation
 A Large Data Base of Q&A is built to Learn, Test and Evaluate with following Testing Objectives:

Test Level for
 Class (+1 Or 2) /
 Subject-Wise / Unit-Wise

Performances of
 Individual / Cumulative /
 Relative

Including Performance
 Improvement Indicators





Soft Source Technologies Pvt Ltd


Regd. Office : # 76, Nungambakkam High Road,
Nungambakkam, Chennai - 600 034. India.

Admin Office : VVM Towers, 2nd Floor,
22A, Pattulos Road, Anna Salai,
Chennai 600 002. India.

 +9198407 65463

 044 2823 2226

 info@softsource.in

 www.softsource.in



**INDIA / UAE / KSA / USA
CHENNAI / KOCHI / MUMBAI**



Benefits and Advantages



To School

Solution As Per CBSE/State Board Syllabus
Standardized Teaching & Learning
Effective Utilization of Smart Class Rooms
Equal Opportunity to Every Students



To Teacher

Back to Class Room (No On-line Lecturing)
100% Syllabus Mapped Solution
Faster and Repeated Revision of Syllabus
Quickly create tests and quizz



To Student

To Score More – Test yourself again & again
Automated Guided and Engaged Learning
Decoded Dynamic Content
In-depth Interactivity with the Solution
What is taught in Class and the same is retained at home



To Parents

Solution for all Exams NEET/JEE/Annual Board Exams
Off-Line Solution – Saving monthly Internet Cost
Focused Learning without any Online Diversion
Cost effective

